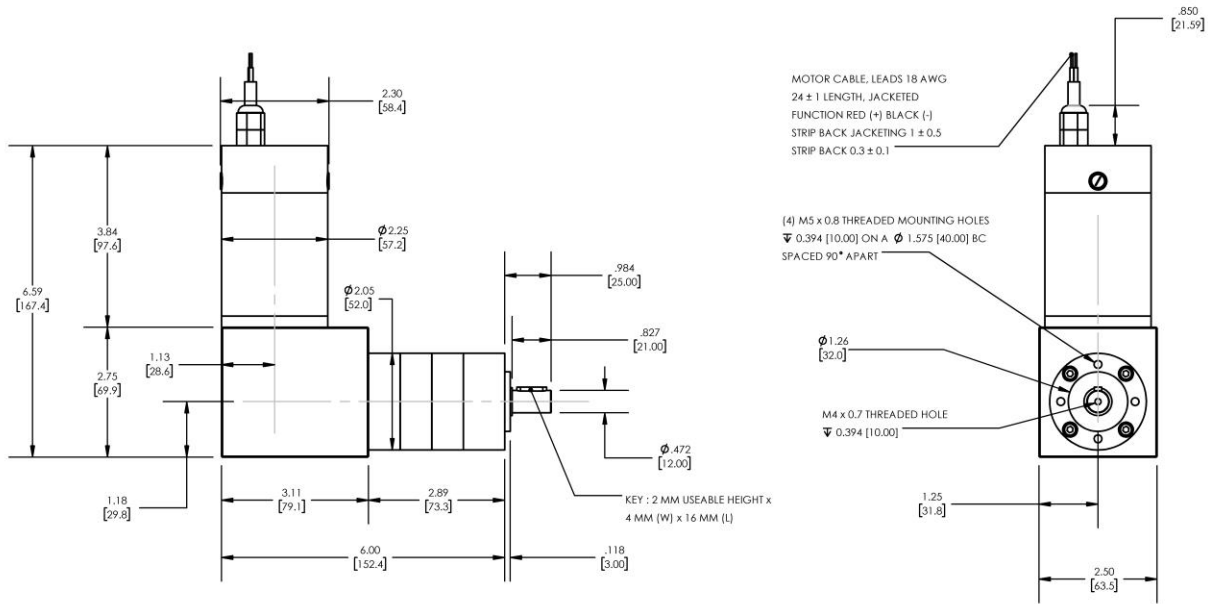




REVERSIBLE BRUSHED DC RIGHT-ANGLED GEARMOTOR

Model Number:

MMP TM57-36V GRA52-115



DIMENSIONS ARE INCHES [MM] UNLESS OTHERWISE STATED

| PLANETARY GEARMOTOR OUTPUT PARAMETERS: | VALUE | UNITS | TOLERANCE |
|--|------------|-------------|-----------|
| Gearhead Ratio (exact) | 115.07 : 1 | | |
| Gearhead Shaft Output Speed (at full-load) | 28 | RPM | MAX |
| Gearmotor Rated Continuous Torque | 156 | In-Lbs | MAX |
| Gearmotor Rated Peak Torque | 413++ | In-Lbs | ---- |
| Gearhead Standard Backlash | 48 | Arc Minutes | MAX |
| Gearhead Efficiency | 70% | ---- | ---- |
| Output Shaft Radial Load Capacity | 102 | Lbs | MAX |
| Output Shaft Axial Load Capacity | 34 | Lbs | MAX |
| Gearmotor Total Weight | 6.1 | Lbs | MAX |

++ All Peak Torque values are dependent upon duty. Contact our sales office for details.

| DC MOTOR PERFORMANCE PARAMETERS: | VALUE | UNITS | TOLERANCE |
|----------------------------------|-------|-----------|-----------|
| Rated DC Voltage | 36 | DC VOLTS | ---- |
| Rated Continuous Current | 3.2 | AMPERES | ---- |
| No-Load Speed | 4500 | RPM | MAX |
| Rated Speed | 3221 | RPM | +/- 15% |
| Rated Continuous Power Out | 74 | WATTS | +/- 15% |
| Rated Continuous Torque | 31 | OZ-IN | ---- |
| Peak Torque (motor only) | 82 | OZ-IN | ---- |
| No-Load Current | 0.38 | AMPERES | MAX |
| Back EMF Constant (Ke) | 8.0 | V/KRPM | +/- 10% |
| Torque Constant (Kt) | 10.8 | OZ-IN/AMP | +/- 10% |
| DC Armature Resistance | 3.16 | OHMS | +/- 15% |
| Armature Inductance | 3.10 | mH | +/- 15% |
| Armature temperature | 155 | DEG. C | MAX |

NOTES:

- NEMA MOUNTING FLANGE OPTION AVAILABLE - [FOLLOW THIS LINK FOR DETAILS](#)

MIDWEST MOTION PRODUCTS, INC

DESIGN, MANUFACTURING & DISTRIBUTION - MOTION CONTROL EQUIPMENT

www.midwestmotion.com

email: sales@midwestmotion.com